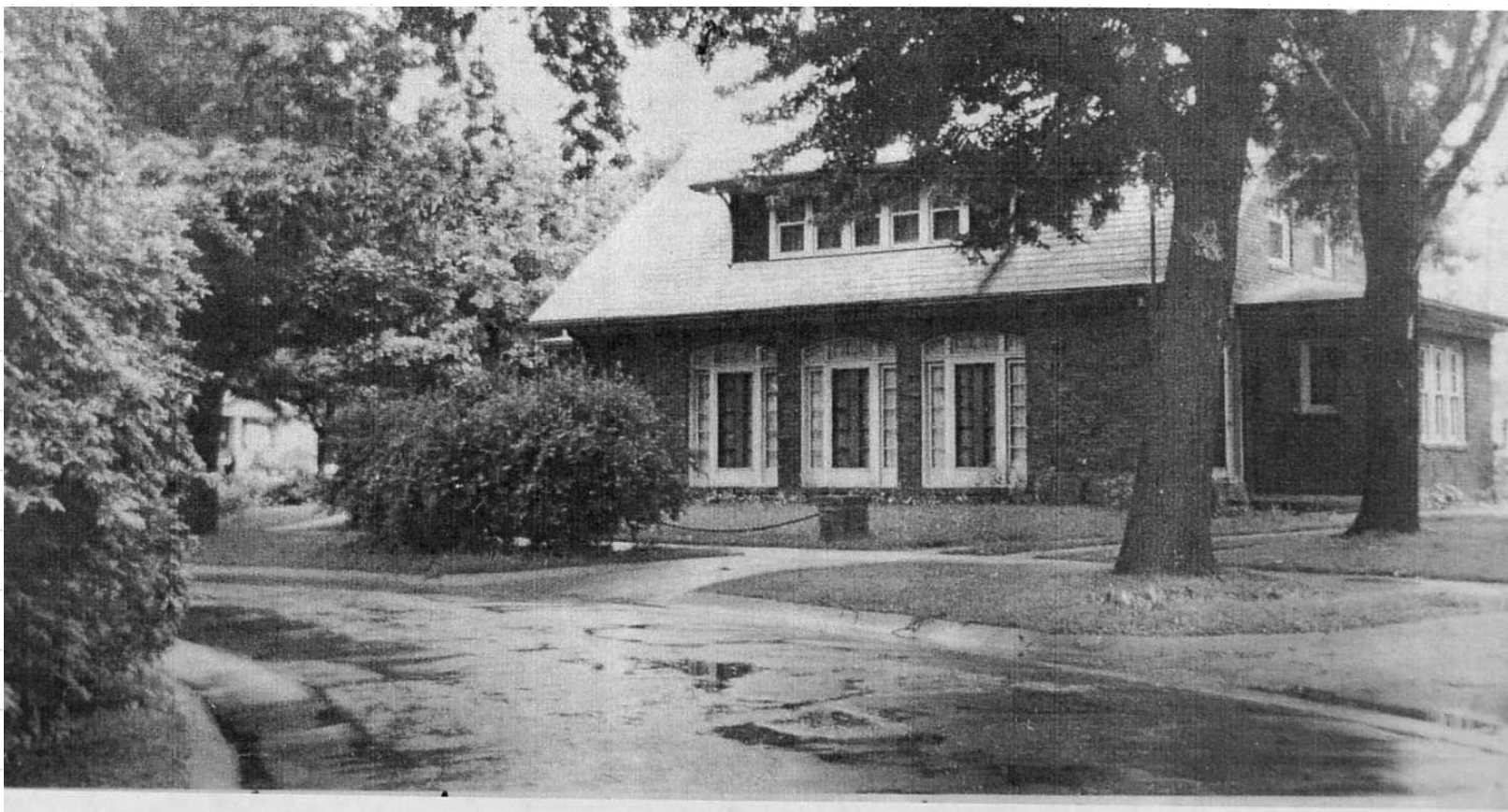


# Genealogy of a House



# A house is a home...

- ◆ Context
- ◆ Sources
- ◆ Genealogy and Historic Preservation
- ◆ "Carl Jaeger Story"

**U.S. TIRES FOR US**  
NOBBY CORD  
ROYAL CORD  
NOBBY FABRIC  
CHAIN     "  
USCO       "  
PLAIN      "

**CARL JAEGER**  
401 N. Washington Avenue, Corner Shawassee St.

**Mobil oils**  
A grade for each type of motor

**LUBRICATING OILS  
AND GREASES  
TRIANGLE GAS**

**STORAGE BATTERIES**  
FOR ALL MAKES OF CARS  
UTILITY—EVER-READY—PREST-O-LITE

# Carl and Amelia Jaeger House



- ◆ Where do you start?
- ◆ What is it!?! Figuring out house style
- ◆ Talking to the neighbors....be careful
- ◆ Walls can talk...

# Textual Sources

- ◆ City Directories
- ◆ County Histories
- ◆ Michigan Gazetteer
- ◆ House plans kits or home catalogs
- ◆ Newspapers

**U.S. TIRES FOR US**  
NOBBY CORD  
ROYAL CORD  
NOBBY FABRIC  
CHAIN     "  
USCO       "  
PLAIN      "

**CARL JAEGER**  
401 N. Washington Avenue, Corner Shiawassee St.

**Mobil oils**  
A grade for each type of motor

**LUBRICATING OILS  
AND GREASES  
TRIANGLE GAS**

**STORAGE BATTERIES**  
FOR ALL MAKES OF CARS  
UTILITY—EVER-READY—PREST-O-LITE



## Michigan County Histories



The Michigan County Histories collection is a collaborative effort of Michigan's Council of Library Directors. The collection is projected to provide access to 192 histories dating from 1866 to 1926. There are 202 volumes in 170 titles currently online. The collection is made possible, in part, through a generous [Library Services and Technology Act \(LSTA\)](#) grant. Read [more](#) about the project.

### Search or Browse the Histories

Enter word or phrase:

**Search**

**Tips:**

Ignore capitalization

Use \* for expansion (e.g. lib\* for liberty, etc)

No need for quotes or other punctuation

#### Other Options

[Simple Searches](#)  
[Proximity Searches](#)  
[Boolean Searches](#)  
[Citation Searches](#)

...

[Browse Michigan County Histories](#)

Go to [UMDL Texts](#) to search multiple collections.

## Clarke Historical Library

# ALADDIN



# Local History: Lansing Stebbins Collection

ADVANCE REALTY CO <sup>CRS</sup>✓  
REALTORS

## PROPERTY REPORT

Date 10/25/1966

Property 612 Linemore AVE. ST.

Assessed Value \$ \_\_\_\_\_

Owned By: Carl Jaeger Estate Phone # \_\_\_\_\_

Who Lives at: \_\_\_\_\_ Occupation: \_\_\_\_\_

Report: % Obrecht

Tenant - Dean Banks 487-0650

10/25 Tenant owns house in another  
city which hasn't sold

Request made by \_\_\_\_\_ Report made by L. Reister

ACTIVE - ALIVE - ALERT - AGGRESSIVE - ADVANCE

BM-11-64-APC

# Lansing Stebbins Collection

612 Dinamore Drive

\$16,000

*no photo*  
HW-8

#4967

2 Story Brick English Cottage  
8 Rms. 4 1st Fl. 4 2nd Fl.  
4 Bdrms.

Owner- Carl Jaeger  
612 Dinamore Dr.

Time Price \$16,000  
Down Pay. 4,000  
Monthly Pay. 120  
No Incumbrance

Lot # se W 53 x 126.4 N x 96.6 E x 90 S: Occupant-owner: Reason for selling-have other property: Library down: Fireplace: 4 pc. bath 1st Fl, 4 pc. bath 2nd Fl: Paint decorations: Floors-oak: Finish-Birch: Weatherstripped: Insulation: John Mansville State roof, good: Scuttle attic: Autom. Heater: Laundry Tubs: Heated by hot water-oil fired: 2 oak garage: Private drive: Quarter sawed oak floors: Bronze screens, storm sash: Living room 12 x 24<sup>1</sup>: Make appointments through Hacker Co: OWNER PHONED 4-23-45 & ASKED THAT THE HOUSE BE NOT SHOWN FOR 2 WEEKS DUE TO ABSENCE FROM THE CITY & OTHER PERSONAL MATTERS.

Listed by Edward G. Hacker Co.  
612 Dinamore Drive

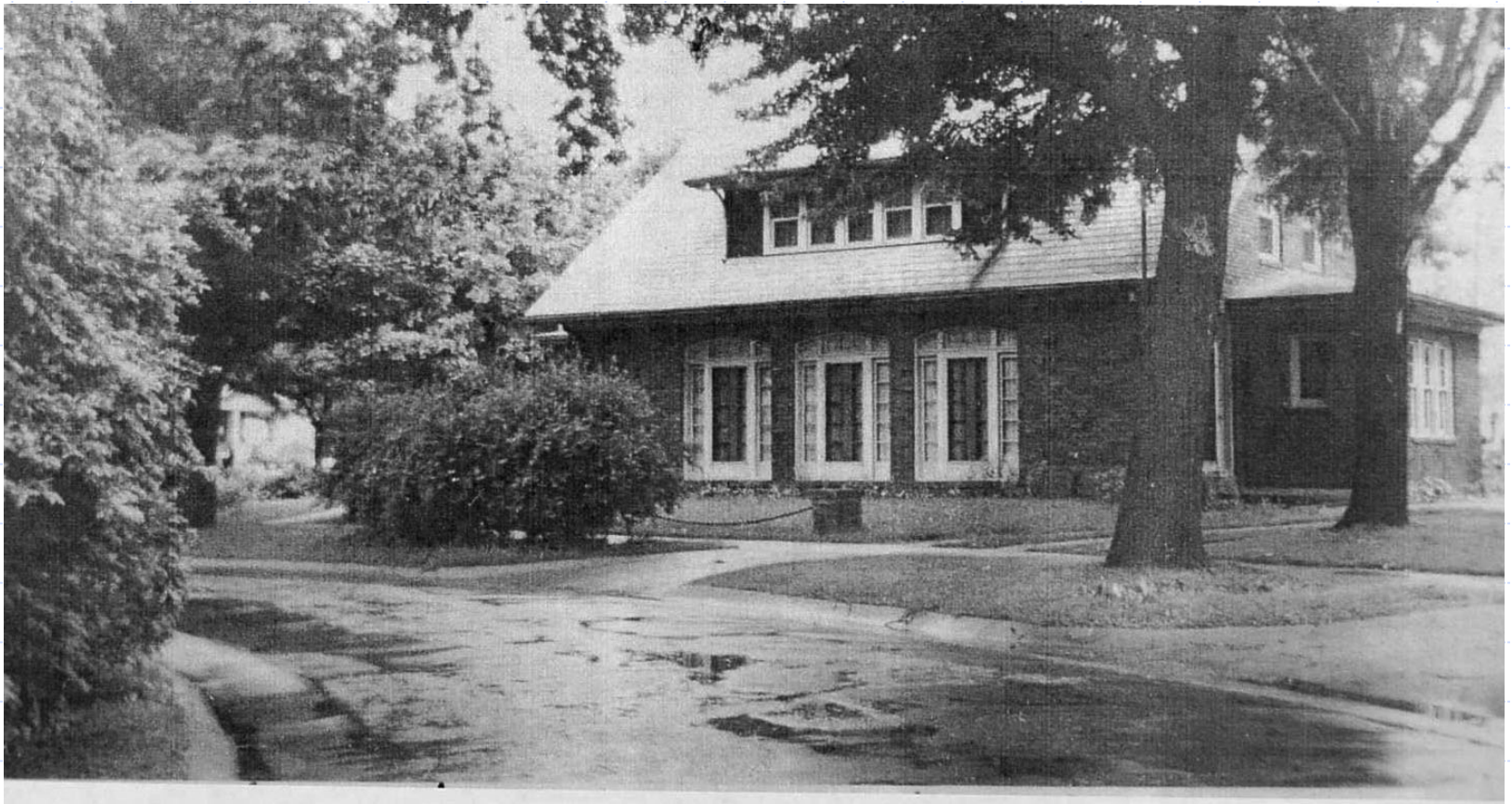
Ph. 57121

\$16,000 HACKER HW-8

4/21/45

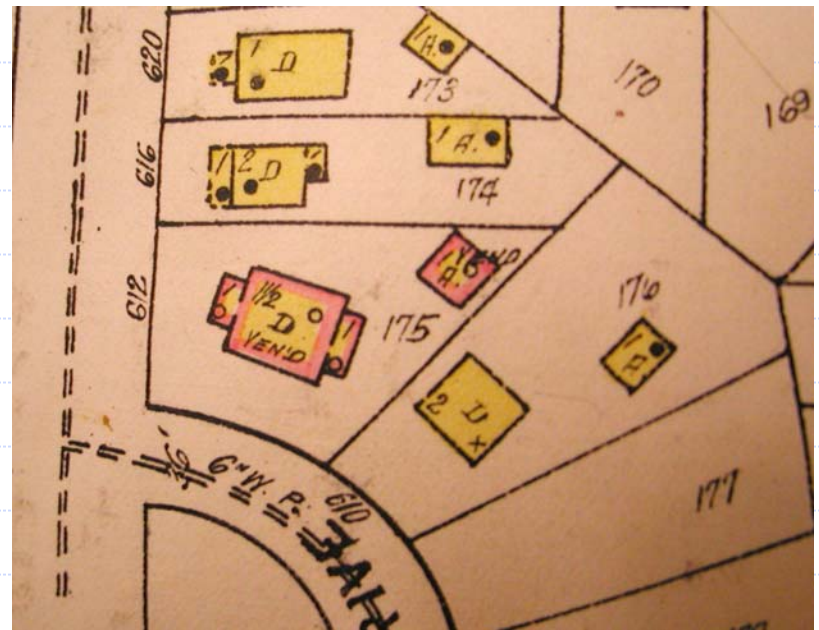
#4967

# Lansing Stebbins Collection



# Graphic Materials

- ◆ Sanborn Fire Insurance Atlas
- ◆ Birdseye Views
- ◆ Plat Books
- ◆ "Built in America"
- ◆ Auditor General Plats



## Birds eye view of the city of Coldwater, Branch Co., Michigan. Drawn & published by A. Ruger.

To change view, select desired zoom level and window size from the options below the Zoom View window and then click on the image. The display will be centered where you click. To move up, down, left, or right within a zoom level, click near the edge of the image in the Zoom View or select an area in the Navigator View. The red box on the Navigator View indicates the area of the image being viewed in the Zoom View.

Zoom View



Navigator View



LC Zoom Viewer - Birds eye view of the city of Coldwater, Branch Co., Michigan. Drawn & published by A. Ruger. - Mozilla Firefox

File Edit View Go Bookmarks Tools Help

http://memory.loc.gov/cgi-bin/map\_item.pl

Go larke historical library

Phonebook Contentdm Adm HAL HUB Page Matt SAM HRMN Answer KHS Digital Collection... Annual Reports Index New York Times Contentdm Adm

**Birds eye view of the city of Coldwater, Branch Co., Michigan. Drawn & published by A. Ruger.**

To change view, select desired zoom level and window size from the options below the Zoom View window and then click on the image. The display will be centered where you click. To move up, down, left, or right within a zoom level, click near the edge of the image in the Zoom View or select an area in the Navigator View. The red box on the Navigator View indicates the area of the image being viewed in the Zoom View.

**Zoom View**

**Navigator View**

Done

Click to zoom in

Click to zoom out

Click to reset



[Michigan.gov Home](#)

[DLEG](#)

[Sitemap](#)

[Contact](#)

[Online Services](#)

[Agencies](#)

Search

GO

## BUREAU OF CONSTRUCTION CODES & FIRE SAFETY

### Statewide Search for Subdivision Plats

Subdivision Name :

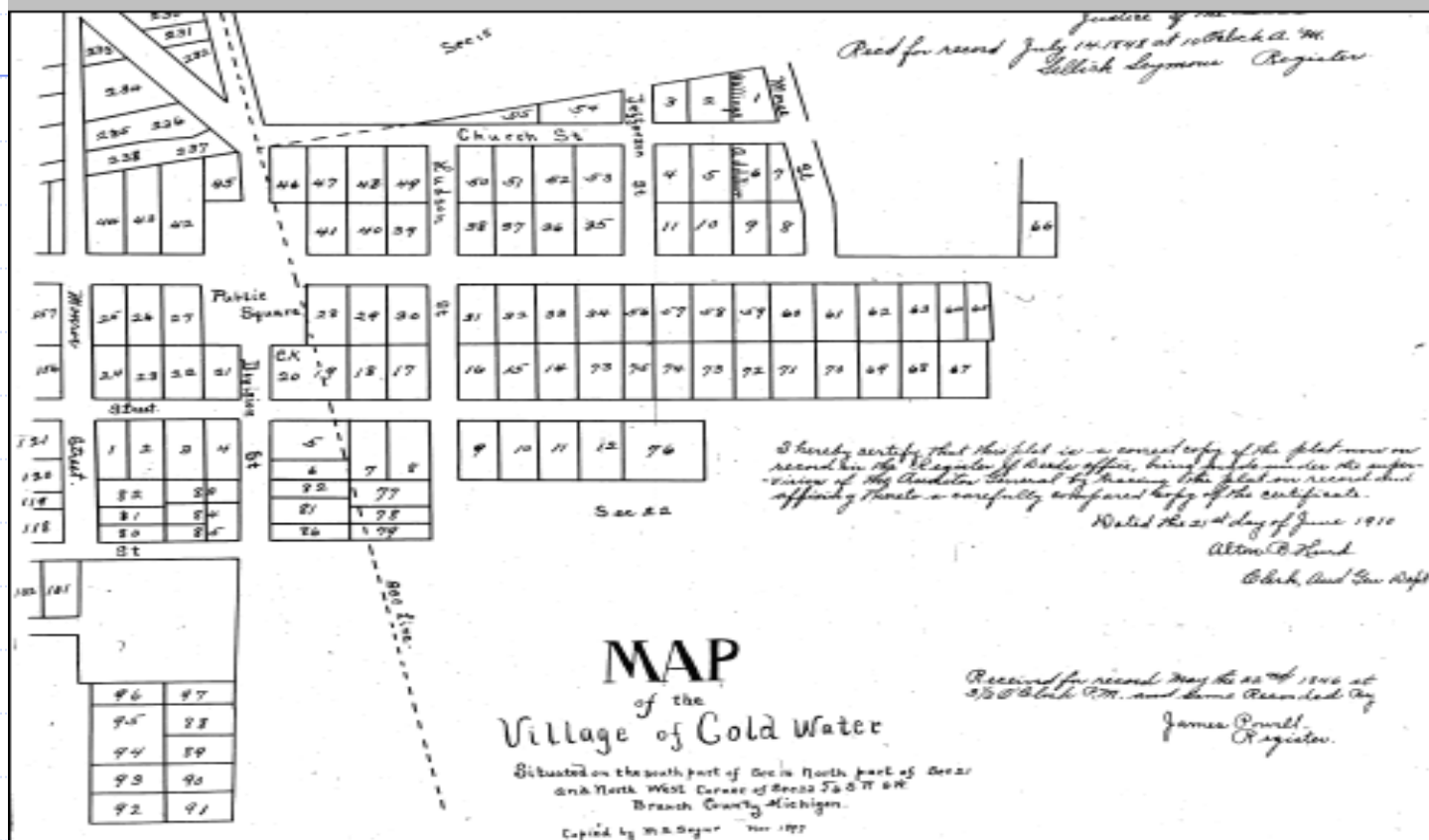
County :

Submit

Reset

[First time users](#)

Advanced Search

[illegible]

John H. Kayser  
Justice of the Peace

## Built in America

The Library of Congress > American Memory Home > Browse Collections

### Search this collection

coldwater



[More search options](#)

- [Collection Home](#)
- [About This Collection](#)

### Features:

- [Gallery](#)
- [HABS/HAER Highlights](#)

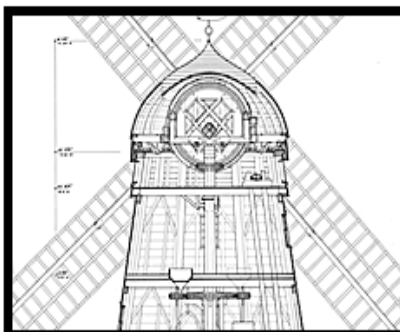
### Browse Collection by:

- [Subject](#)
- [Place](#)

[View more collections](#) from the [Prints and Photographs Division](#)

### Collection Connection

Classroom resources for teachers from the Learning Page



Beebe Windmill, Bridgehampton, New York.

[About this image](#)

## Built in America

Historic American Buildings Survey/Historic American Engineering Record, 1933-Present

### Overview

The Historic American Buildings Survey (HABS) and the Historic American Engineering Record (HAER) collections are among the largest and most heavily used in the Prints and Photographs Division of the Library of Congress. The collections document achievements in architecture, engineering, and design in the United States and its territories through a comprehensive range of building types and engineering technologies including examples as diverse as the [Pueblo of Acoma](#), [houses](#), [windmills](#), [one-room schools](#), the [Golden Gate Bridge](#), and buildings designed by [Frank Lloyd Wright](#). Administered since 1933 through cooperative agreements with the National Park Service, the Library of Congress, and the private sector, ongoing programs of the National Park Service have recorded America's built environment in multiformat surveys comprising more than 350,000 measured drawings, large-format photographs, and written histories for more than 35,000 historic structures and sites dating from Pre-Columbian times to the twentieth century.

American Memory from the Library of Congress - Browse by - Mozilla Firefox

File Edit View Go Bookmarks Tools Help

http://memory.loc.gov/cgi-bin/query

Phonebook Contentdm Adm HAL HUB Page Matt SAM HRMN Answer KHS Digital Collection... Annual Reports Index New York Times Contentdm Adm

The LIBRARY of CONGRESS  
AMERICAN MEMORY

HOME BROWSE ABOUT HELP CONTACT

Search all collections

**Built in America**  
The Library of Congress > American Memory Home > Browse Collections > Collection Home

**Search this collection**

GO

More search options

→ [Collection Home](#)  
→ [About This Collection](#)

**Features:**

→ Gallery  
→ [HABS/HAER Highlights](#)

**Browse Collection by:**

→ [Subject](#)  
→ [Place](#)

**View more collections** from the [Prints and Photographs Division](#)

**Collection Connection**  
Classroom resources for teachers from the Learning Page

**Built in America**

**Results 1-9 of 9 for battle creek, mi**

Page 1 of 1

Display: [List](#) [Gallery](#)

**Item Titles**

1. [West Michigan Avenue Bridge, Spanning Battle Creek River, Battle Creek, Calhoun County, MI](#)
2. [U.S. Veterans Bureau Hospital No. 100, 5500 Armstrong Road, Battle Creek, Calhoun County, MI](#)
3. [U.S. Veterans Bureau Hospital No. 100, Building No. 2, 5500 Armstrong Road, Battle Creek, Calhoun County, MI](#)
4. [U.S. Veterans Bureau Hospital No. 100, Ward II, 5500 Armstrong Road, Battle Creek, Calhoun County, MI](#)
5. [Percy Jones Hospital, Commander's Quarters, 100 West Washington Street, Battle Creek, Calhoun County, MI](#)
6. [Fort Custer Military Reservation, P-67 Radar Station, .25 mile north of Dickman Road, east of Clark Road, Battle Creek vicinity, Calhoun County, MI](#)
7. [Fort Custer Military Reservation, Bounded by Territorial, Dickman, & Longman Roads & Route 94 Business, Battle Creek vicinity, Calhoun County, MI](#)

start

Novell-delivere... Novell GroupWi... Monthly Repor... Microsoft Powe... American Mem... Mail From: Tam...

3:33 PM  
Tuesday  
1/10/2006



## Historic American Buildings Survey/Historic American Engineering Record



browse photos



data pages



photo caption pages

(If noted, names of photographers and date of creation are found in the photo caption pages.)

Michigan Central Railroad Station, Capitol Avenue, Battle Creek, Calhoun County, MI

Photographs 1 through 5 of 5

*For a larger reference image, click on the picture or text.*

[Back to catalog record](#) | [Built in America Home Page](#)



[1. EXTERIOR, NORTH AND EAST SIDES](#)  
[HABS MICH,13-BATCR,1-1](#)



[2. EXTERIOR, NORTH SIDE](#)  
[HABS MICH,13-BATCR,1-2](#)



[3. EXTERIOR, SOUTH SIDE](#)  
[HABS MICH,13-BATCR,1-3](#)



[4. INTERIOR, ORIGINAL TICKET OFFICE](#)  
[HABS MICH,13-BATCR,1-4](#)




LOC Photo Display - Mozilla Firefox

File Edit View Go Bookmarks Tools Help

http://memory.loc.gov/cgi-bin/displayPhoto.pl?path=/pnp/habshaer/mi/mi0000/mi0032/photos&topImages=088494; Go built in america

Phonebook Contentdm Adm HAL HUB Page Matt SAM HRMN Answer KHS Digital Collection... Annual Reports Index New York Times Contentdm Adm

## 2. EXTERIOR, NORTH SIDE HABS MICH,13-BATCR,1-2



Done

# Official Records

## ◆ Government records:

- Register of Deeds
- Assessor's Office
- Building/Code Compliance Dept.
- Tax records
- City Council Minutes
- Rural Property Inventories



## City of Coldwater

### Clerk/Assessor's Office



*City of Coldwater Established 1861*

[Area Parks](#)

[Clerk/Assessor's Office](#)

[Disposal & Recycling](#)

[Engineering](#)

[Administrative Services Department](#)

[Fire Department](#)

[Municipal Services](#)

[Neighborhood Services](#)

[Planning/Zoning/Grant Office](#)



[City Clerk Information](#)

[Link to all Secretary of State Offices in United States](#)

[Absentee Voter Application](#)


City of Coldwater - Mozilla Firefox

File Edit View Go Bookmarks Tools Help

http://www.coldwater.org/services/zoning.htm

Phonebook Contentdm Adm HAL HUB Page Matt SAM HRMN Answer KHS Digital Collection... Annual Reports Index New York Times Contentdm Adm


SAM  
http://www.michigan.gov/hal/0,1607,7-160-17445\_19273\_19313---,00.html



**CITY OF COLDWATER**  
MICHIGAN • 1861

# City of Coldwater

## Planning/Zoning/Grants



*City of Coldwater Established 1861*

**Area Parks**

**Clerk/Assessor's Office**

**Disposal & Recycling**

**Engineering**

**Administrative Services Department**

**Fire Department**

**Municipal Services**

**Neighborhood Services**

**Planning/Zoning/Grant Office**

[2004 Housing Market Study](#)

[2006-2011 Capital Improvement Plan](#)

[2004 Housing Rehabilitation Grant Guidelines and Application](#)

The Office of Planning/Zoning/Grants is staffed by the Planning and Grant Coordinator/Zoning Administrator and provides staff assistance to the City Council, Planning Commission and the Zoning Board of Appeals.

### Planning Commission

The City of Coldwater Planning Commission serves as an advisory group of the city. The commission administers the Coldwater Comprehensive Plan that sets forth the policies, guidelines and land use designations for long-range development of the city. As new trends are recognized and priorities change, it is the responsibility of the Planning Commission to propose changes to the Comprehensive Plan and Zoning Ordinance that will promote the public health, safety and welfare of the community.

Planning Commission also reviews all rezoning requests, special use permits, subdivision plats, lot splits and development site plans. The Planning Commission meets on the first Tuesday of each month (April is the second Tuesday) at 7:30 p.m. in the City Council Chamber of the Municipal Building. All meetings are open to the public.

Done

# Rural Property Inventory Card

Form 21 Michigan State Tax Commission W.P.A. Project S-110 Lansing Litho, Lansing, Michigan. 3-22-57-1200M.

YR. OF INV.	SCHOOL DISTRICT	SEC.	T.	R.	VILLAGE	TOWNSHIP	COUNTY	CODE NO.	
1939	2. fr	31	15	44		Clarence	Cashoan	403 313	
ASSESSED TO <i>Alexander, Peter</i>						RURAL PROPERTY			
						CLASS	USE <i>Single H</i>		
						GRAVEL RD.; IMPROVED RD.	MI.	BUILT 1880	REMODELED 1918
						TRADING CENTER <i>CRINGIER</i> MI.	(Name)	SQ. FT.	CU. FT.
						R.F.D.	MI.; SCHOOL	MI.	FOUNDATION <i>Stone</i>
						ELEC. LINE	MI.	ROOFING <i>Gable, 100 Shg</i>	
						TELEPHONE	MI.	WALLS <i>100 Shg</i>	
						GAS LINE	MI.	CONSTR. <i>100 Shg</i>	
						WATER SUPPLY <i>IN WELL</i>		BASEMENT <i>Part</i>	
						ADEQUATE <input checked="" type="checkbox"/> YES <input type="checkbox"/> NO		HEATING <i>Stove</i>	
						PLATTED & VILL. PROP.		PLUMBING	
FRONT. <input checked="" type="checkbox"/> DEEP		NO. STORIES <i>2</i>	NO. RMS. <i>12</i>						
K. FACTOR		FLOORS <i>Pipe</i>							
ST.	<input type="checkbox"/> CURB	INT. FINISH <i>Plaster</i>							
RUN'G WATER	SIDEWALK	LIGHTS <i>oil</i>							
ELECTRICITY	SEWER	MISC.							
FIRE PROTECTION	GAS	LAND							
<p><i>W 1/2, NE 1/4 80 acres</i></p> <p><i>80 acres</i></p>						<p>REMARKS</p> <p>OTHER BLDGS.</p>			
<p>SUPERVISOR</p> <p>LAND</p> <p>BLDG.</p> <p>TOTAL</p> <p>ED. REVIEW</p> <p>TAX COM.</p> <p>LAND</p> <p>BLDG.</p> <p>TOTAL</p>						<p>19 19 19 19 19 19 19 19 19 19</p>			

# Sources

- ◆ National Park Service Preservation Bulletins [www.nps.gov](http://www.nps.gov)
- ◆ Library of Congress American Memory Project, [www.loc.gov](http://www.loc.gov)
- ◆ Built in America,  
[http://memory.loc.gov/ammem/collections/habs\\_haer/](http://memory.loc.gov/ammem/collections/habs_haer/)
- ◆ Aladdin Homes Collection, Clarke Historical Library,  
<http://clarke.cmich.edu/>
- ◆ City of Coldwater, Assessor,  
<http://www.coldwater.org/services/clerk.htm>
- ◆ State Auditor General Plats, [http://www.michigan.gov/som/0,1607,7-192-29943\\_31469\\_31893-30602--CI,00.html](http://www.michigan.gov/som/0,1607,7-192-29943_31469_31893-30602--CI,00.html)
- ◆ Michigan County Histories, <http://www.hti.umich.edu/m/micounty/>
- ◆ State Archives online search, [www.michigan.gov/statearchives](http://www.michigan.gov/statearchives)  
"Answer Online Search"


State Archives of Michigan - Mozilla Firefox

File Edit View Go Bookmarks Tools Help

http://www.michigan.gov/hal/0,1607,7-160-17445\_19273\_19313---,00.html

Phonebook Contentdm Adm HAL HUB Page Matt SAM HRMN Answer KHS Digital Collection... Annual Reports Index New York Times Contentdm Adm

# History, Arts and Libraries



Michigan.gov  
An Official State of Michigan Web Site

Michigan.gov Home HAL Home Site Map Contact HAL FAQ HAL Jobs HAL Online Services

Search

[\[Printer Friendly\]](#) [\[Text Version\]](#)

## Welcome to the State Archives

About the State Archives of Michigan  
With documents dating back to 1792, the State Archives of Michigan houses much of Michigan's record heritage.

State Archives Quick Links  
Quick access to your favorite archives resources!

eBay and Archival Collections  
A statement on private sales of public records.

## Archives Spotlight

State Archives Digital Collections  
State Archives Images Online

Military Sources Page  
The State Archives contains primary material on Michigan's wars - from territorial days to World War II and beyond.

New Acquisitions!  
Check out the new records that have arrived at the State Archives!

### Our Agencies



- > Library of Michigan
- > Michigan Historical Center
  - [Michigan Historical Museum System](#)
  - [State Archives of Michigan](#)
  - [Records Management](#)
  - [State Historic Preservation Office](#)
  - [Michigan History magazine](#)
  - [Office of the State Archaeologist](#)
  - [MHC Foundation & The Friends of Michigan History](#)
  - [Odyssey](#)
  - [Join Us!](#)

### Departments & Agencies

- State Sponsored Sites
- Online Services
- RSS Feed Index**

### HAL Quick Links


- HAL Public Hours
- ANSWER Library Catalog
- HAL Press Releases
- HAL Site Subject List
- I HAVE AN IDEA
- MICASE - Michigan Creative After School Experiences
- What's Happening in Michigan?



### Programs & Services

- Services for Government Agencies

### Image of the Month



Online Catalog

# Barnes Mansion







# Thank you

Mark Harvey

State Archives of Michigan

702 W. Kalamazoo St.

Lansing, MI 48915

(517) 373-1408

[Archives@mi.gov](mailto:Archives@mi.gov)

<http://www.michigan.gov/statearchives>